

JEREMIAH



LOGLINE

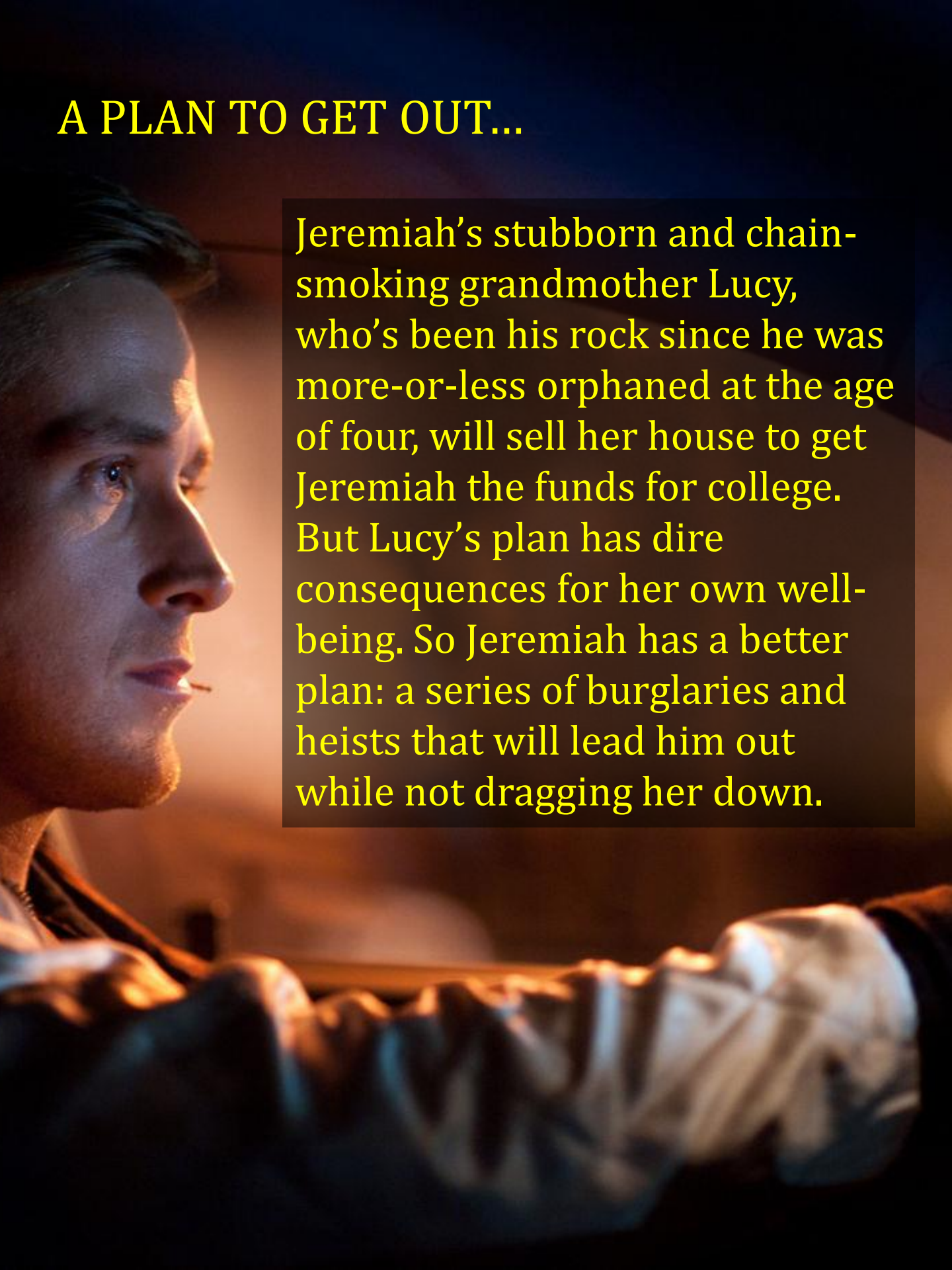
A high-school senior attempts to leave his small town and reverse the damaging cycles of his family by taking part in a series of escalating crimes that he feels are his only ticket out.



SUMMARY

Set against a water crisis just outside the inner city's decay and desolation, Jeremiah needs a way out from his family history of self-destruction and crime. With his best friend and inner-city lifer, Benny, he's finally got a shot.

A PLAN TO GET OUT...



Jeremiah's stubborn and chain-smoking grandmother Lucy, who's been his rock since he was more-or-less orphaned at the age of four, will sell her house to get Jeremiah the funds for college. But Lucy's plan has dire consequences for her own well-being. So Jeremiah has a better plan: a series of burglaries and heists that will lead him out while not dragging her down.

BREAKING THE LAW...



If Jeremiah's going to break the cycle, he's going to have to break the law. He just might pull it off if he can stay ahead of Charlotte, a hard-nosed determined veteran police detective and her Partner Henry.

WALLS ARE CLOSING IN...

With Charlotte on his trail, Jeremiah gets more desperate and Benny's impulsive behavior gets more dangerous. Meanwhile, Jeremiah's relationship with his straight-and-narrow track star girlfriend heats up and his estranged ex-con of a dad wants a second chance.



FINAL ACT...

Jeremiah knows he can make it all work, but how far is he willing to go to truly break free?



TONE AND ATMOSPHERE...

The movie is best described as...



HELL
OR
HIGH
WATER

...meets...



Ryan Gosling

DRIVE

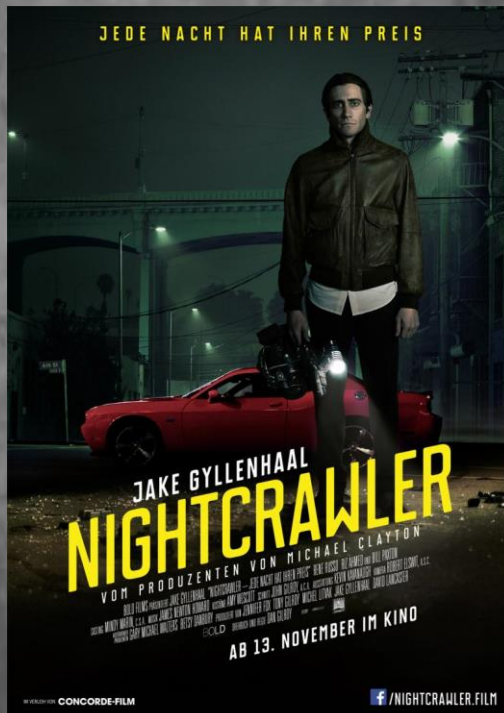
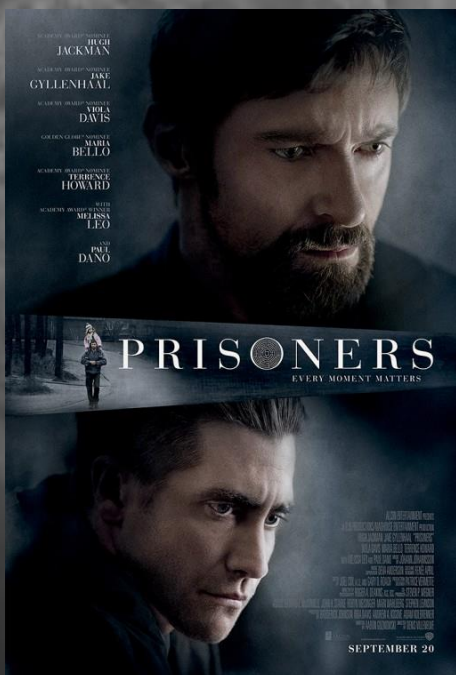
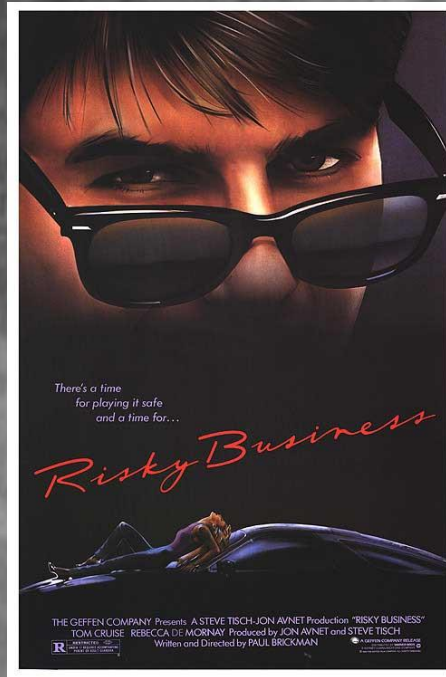
GET IN. GET OUT. GET AWAY.

A FILM BY NICOLAS WINDING REFN

BEST DIRECTOR
FESTIVAL DE CANNES

STONE AND ATMOSPHERE...

...with an atmospheric tone similar to A24 films and these titles...



CHARACTERS

CHARLOTTE (Police Detective)



Charlotte is a veteran police detective with one case left before her voluntary leave of absence. She's a badass - pushing through the ranks in a mostly male-driven profession. Her hard exterior hides her vulnerability. With the prospect of infertility on her horizon she's bent but not broken. She's a realist, given her years on the force, but she's holding onto a glimmer of hope however fragile it may be.



CHARACTERS

SAMUEL (JEREMIAH'S FATHER)



Samuel is a man paying a penance. The once formidable, aggressive, top-of-the-world drug hustler is now a shadow of his older self but in a good way. After serving a 12 year prison sentence, he has no where to go but up and he's not going to screw it up. He's rebuilding the house he left and repairing his relationship with his son, Jeremiah. He'll do anything to be back in Jeremiah's life.

CHARACTERS

JEREMIAH



The son of generations of self-destructive men, Jeremiah is very aware of the lack of a future he could be destined for. He's a good kid in a bad situation. With a pulling feeling deep down inside, he knows he has to leave his town and create a better life and reverse the family cycles of pain. Unfortunately, a string of robberies is the only way he knows how to get out. If caught it would continue the cycle of violence.

CHARACTERS

BENNY



Raised in the inner-city with a strong street sense, Benny ain't ever leavin' and he knows it. He's like a big brother to Jeremiah. Although a bit of a hot-head and impulsive, he's loyal to a fault and would give you the shirt off his back if you needed it.

SOSI



An eternal optimist and dreamer. She wants out of the city but to do it, it'll be working her ass off to earn a track scholarship. A budding romance between her and Jeremiah raises her concerns when Jeremiah is out breaking the law even though it's for a good cause.

CINEMATOGRAPHY

The cinematography is a major part of the tone and atmosphere of JEREMIAH. Very MOODY, with deep black colors, and a feeling of claustrophobia at times and isolation at others.

Moody atmospheric yellow and orange colors



CINEMATOGRAPHY

The darker colors and uses of light give a very SEXY quality to the film.

Late sunsets and neon colors



CINEMATOGRAPHY

Long hallways to aid in isolation, and raw gritty, realist images.



LOCATION

Originally written to take place just outside of Detroit in the Fall, production would take place in New Jersey to utilize the 30%+ tax incentive.

Lower middle class...



Jeremiah &
Lucy's House



Samuel's House



Forgotten city



A town nobody
cares about

THE CAR!

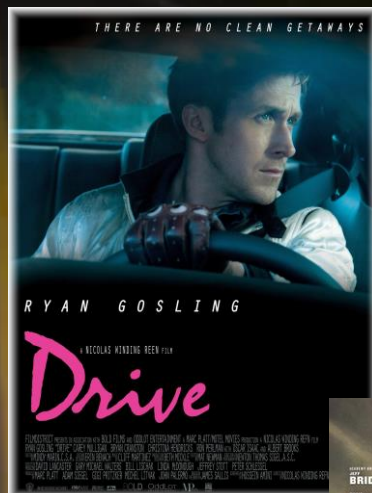
What's a heist film without the cool car?! The late 80s Monte Carlo SS will be an UNFORGETTABLE car.

Benny's Pride n Joy...



MUSIC

JEREMIAH was written entirely to the ambient Tangerine Dream score from RISKY BUSINESS, the instrumental tension building and emotion inducing scores of Nick Cave and Warren Ellis (HELL OR HIGH WATER, ASSISINATION JESSE JAMES), and the up-tempo melodic thumping score to DRIVE. Combined it gives a sense of urgency and energy that propels us deeper into the story and into the characters' mindsets as we lead towards the final heist.



TEAM BIOS

JONATHAN SALEMI – Writer/Director

Jonathan Salemi is a film and television Director and Producer. He's Directed numerous award-winning short films, feature documentaries, and has Produced for Network Television.

Projects he's Directed and/or Produced have been seen in Limited Theatrical Release, NetFlix, Hulu, LIFETIME, HISTORY CHANNEL, PBS, and more.

The Boston native is very camera knowledgeable and works extremely well with actors. All of the films he's Directed have high production values, keen eye for direction and visuals, and powerful performances. His level of preparation and friendly collaborative attitude on set makes his crews and cast rally around him. His attention to detail and dedication inspires all team members to perform at their "A" game.

CONTACT

Justin Ross

Justin L. Ross, EVP of Development
Bohemia Group Originals | Bohemia Group

justin@bohemiaent.com

(323) 462-5800 (o)

Jonathan Salemi

Writer/Director

Jonathan.Salemi@gmail.com

(310) 951-7766 (o)